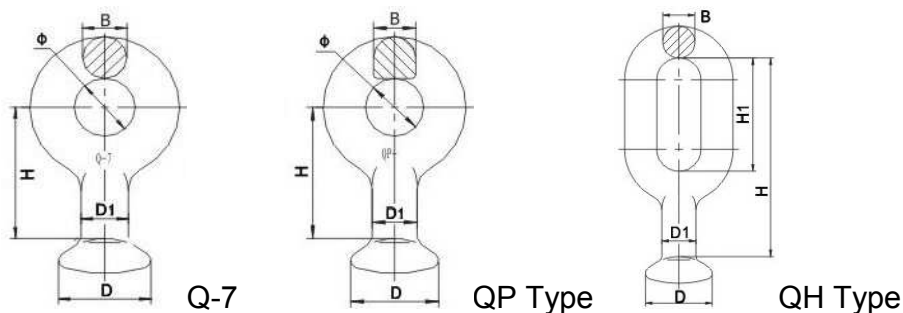




Link Fittings

Link fittings are used to link clamps to insulators, or to link insulator and wire clamp to tower arms and substation structures. WINNING® link fittings are mainly made of heat treated steel that is more suitable for forging with good performances. Dimensions of ball and socket for special linkage are in accordance with IEC 120 and GB4056-83 standards.

1. Ball Eye (Q, QP, QH type)

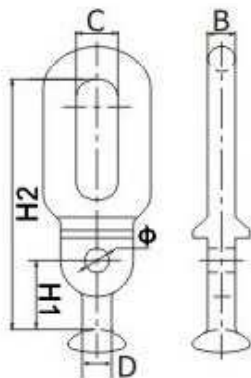


Catalog No.	Main Dimensions (mm)					Size of Coupling	Rated Failure Load (kN)	Weight (kg)
	D1	D	B	Φ	H			
Q-7	17	33.3	16	22	50	16	70	0.3
QP-7	17	33.3	16	18	50	16	70	0.3
QP-10	17	33.3	16	20	50	16	100	0.3
QP-12	17	41.0	16	24	60	16	120	0.5
QP-12G	17	33.3	17	24	60	16	120	0.4
QP-16	21	41.0	20	26	60	20	160	0.5
QP-16G	21	41.0	18	26	60	20	160	0.5
QP-20	25	49.0	24	30	80	24	200	1.0
QP-21D	21	41.0	24	30	70	20	210	0.9
QP-30	25	49.0	28	39	80	24	300	1.1
QP-2120G	21	41.0	20	26	80	20	210	0.7
QP-3224G	25	49.0	28	33	80	24	320	1.2
QP-4228G	29	57.0	32	39	100	28	420	1.5
Catalog No.	Main Dimensions (mm)					Size of Coupling	Rated Failure Load (kN)	Weight (kg)
	D1	D	B	H1	H			
QH-7	17	33.3	16	57	100	16	70	0.6
QH-10	17	33.3	18	60	110	16	100	1.1
QH-12	17	33.3	19	45	90	16	120	1.1
QH-16	21	41.0	18	80	127	20	160	1.3
QH-20/16	21	41.0	22	85	135	20	160	1.5
QH-21	21	41.0	20	80	150	20	210	1.3
QH-30	25	49.0	22	98	150	24	300	1.7

Hot Dip Galvanized Steel.



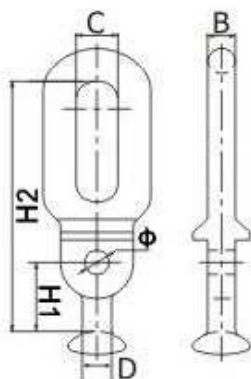
2. Ball Eye (Parallel type)



Catalog No.	Suitable Insulator	Main Dimensions (mm)						Rated Failure Load (kN)	Weight (kg)
		H1	H2	C	D	B	Φ		
Q-7M	XP-7	60	130	18	16	16	14	70	1.0
Q-12M	XP-12	70	145	22	18	18	14	120	1.3
Q-16M	XP-16	78	160	24	20	20	14	160	1.5

Materials are Hot Dip Galvanized Steel.

3. Ball Eye (perpendicular type, horn holder type)

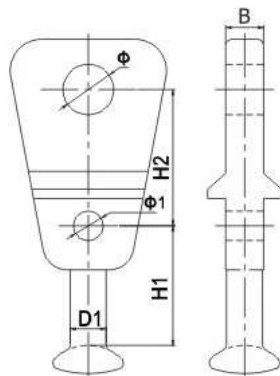


Catalog No.	Main Dimensions (mm)							Size of Coupling	Rated Failure Load (kN)	Weight (kg)
	H	B	Φ	D1	D	H2	L2			
Q-7N	152	16	14	17	33.3	51	55	16	70	1.2
Q-10N	152	16	14	17	33.3	59	55	16	100	1.3
Q-12N	135	18	14	17	33.3	68	55	16	120	1.5

Materials are Hot Dip Galvanized Steel.



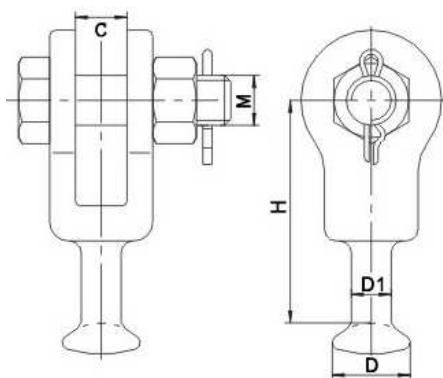
4. Ball Eye (QA, QP type)



Catalog No.	Suitable Insulator	Main Dimensions (mm)						Rated Failure Load (kN)	Weight (kg)
		H1	H2	C	D	B	Φ		
Q-7A	XP-7	48	56	17	20.5	17.5	19	70	0.50
Q-12A	XP-12	48	56	17	20.5	17.5	19	120	0.65
Q-7P	XP-7	57	60	17	20	14	16	70	0.80
Q-12P	XP-12	57	65	17	24	14	18	120	085

Materials are Hot Dip Galvanized Steel.

5. Ball Eye (QU type)

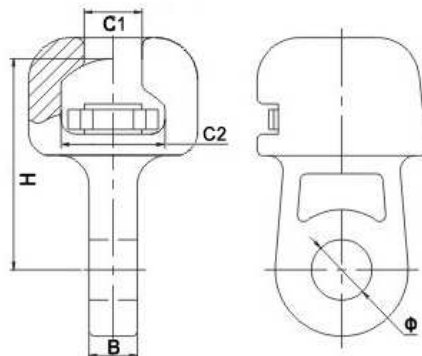


Catalog No.	Main Dimensions (mm)					Size of Coupling	Rated Failure Load (kN)	Weight (kg)
	H	D1	D	M	C			
Q-7U	89	17	33.3	16	20	16	70	0.73
Q-10U	89	17	33.3	18	28	16	70	0.75
Q-12U	94	17	33.3	22	22	16	120	0.85
Q-16U	78	21	41.0	18	24	20	160	0.98
Q-16UA	80	21	41.0	24	26	20	160	1.12
Q-21U	102	21	41.0	27	30	20	210	1.35
Q-30U	110	25	49.0	36	38	24	300	2.14

The socket-clevis eyes are Malleable Iron or Casting Steel. Clips are bronze or Stainless Steel, cotter pins are Stainless Steel. All ferrous parts are Hot Dip Galvanized Steel.



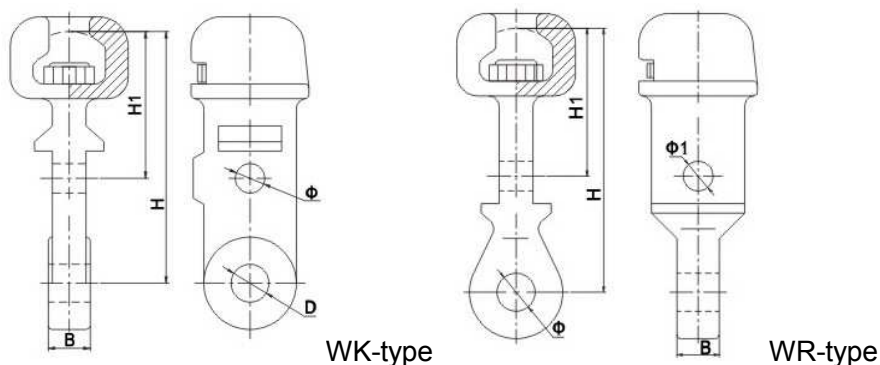
6. Socket-Clevis Eye (W type)



Catalog No.	Main Dimensions (mm)					Size of Coupling	Rated Failure Load (kN)	Weight (kg)
	B	C1	C2	H	Φ			
W-7A	16	19.2	34.5	70	20	16	70	0.80
W-7B	16	19.2	34.5	115	20	16	70	0.92
W1-10	18	19.2	34.5	85	20	16	100	0.90
W1-12	20	19.2	34.5	90	24	16	120	1.30
W-12	20	23.0	42.5	90	24	20	120	1.40
W-30	32	27.5	21.0	110	39	24	130	3.50

The socket-clevis eyes are Malleable Iron or Casting Steel. Clips are Bronze or Stainless Steel, cotter pins are Stainless Steel. All ferrous parts are Hot Dip Galvanized Steel.

7. Socket-Clevis Eye (WK, WR type)

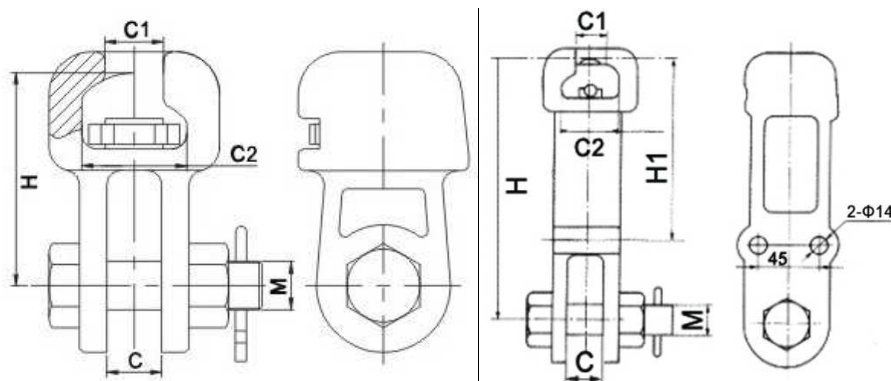


Catalog No.	Suitable Insulator	Main Dimensions (mm)					Rated Failure Load (kN)	Weight (kg)
		H	H1	Φ	Φ1	B		
W1-7K	XP-7; XP-4.5	120	70	20	18	14	70	1.0
W1-12K	XP-12	120	70	22	24	14	120	1.3
W1-7R	XP-7; XP-4.5	120	70	20	14	20	70	1.0
W1-12R	XP-12	120	70	22	14	22	120	1.3

W1-7K, W1-7R socket eyes are Malleable Iron; W1-12K, W1-12R socket eyes are Casting Steel. Clips are Bronze or Stainless Steel, cotter pins are Stainless Steel. All ferrous parts are Hot Dip Galvanized.



8. Socket-Clevis Eye (WS type, WS elongated type)



Catalog No.	Main Dimensions (mm)					Size of Coupling	Rated Failure Load (kN)	Weight (kg)
	C	C1	C2	M	H			
WS-7	18	19.2	34.5	16	70	16	70	0.97
WS-10	20	19.2	34.5	18	85	16	100	1.70
WS-12G	20	19.2	34.5	18	85	16	120	1.70
WS-12	24	19.2	42.5	22	85	20	120	3.81
WS-12X	24	19.2	34.5	22	90	16	120	3.10
WS-12A	20	19.2	34.5	22	85	16	120	1.80
WS-16	26	23.0	42.5	24	95	20	160	2.64
WS-20	30	27.5	51.0	27	100	24	200	4.30
WS-20DF	30	23.0	42.5	27	100	20	210	4.50
WS-30	38	27.5	51.0	36	110	24	300	5.70
WS-16G	22	23.0	42.5	24	95	20	160	2.64
WS-21G	24	23.0	42.5	24	105	20	210	350
WS-32G	32	27.5	51.0	30	110	24	320	4.80
WS-42G	36	32.0	59.0	36	120	28	420	5.60

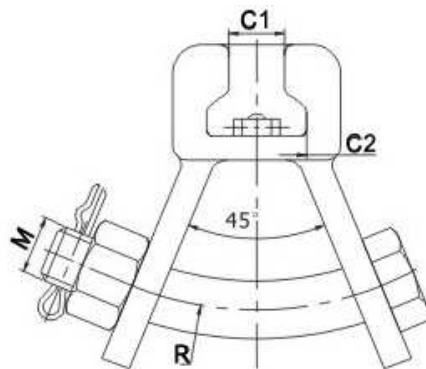
Specifications below are for Socket-Clevis Eye, Elongated Type

Catalog No.	Main Dimensions (mm)					Size of Coupling	Rated Failure Load (kN)	Weight (kg)
	C	C1	C2	M	H			
WS-7AG	18	19.2	34.5	16	105	16	70	2.10
WS-16A	26	23.0	42.5	24	195	20	160	4.30
WS-21B	30	23.0	42.5	27	195	20	210	4.70

The socket-clevis eyes are Malleable Iron or Casting Steel. Clips are Bronze or Stainless Steel, cotter pins are Stainless Steel. All ferrous parts are Hot Dip Galvanized Steel.



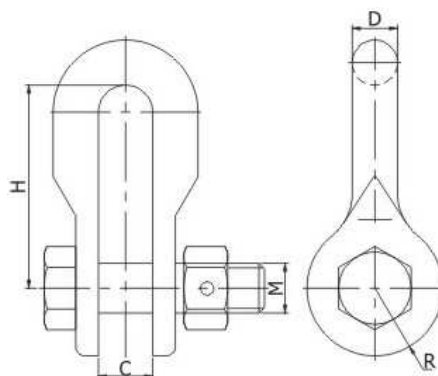
9. Socket-Clevis (WSY type)



Catalog No.	Main Dimensions (mm)				Size of Coupling	Rated Failure Load (kN)	Weight (kg)
	C1	C2	M	R			
WSY-21	23.0	42.5	27	100	20	210	4.9
WSY-30	27.5	51.0	30	110	24	300	4.9

The socket-clevis eyes are Malleable Iron or Casting Steel, clips are Bronze or Stainless Steel, and cotter pins are Stainless Steel. All ferrous parts are Hot Dip Galvanized Steel.

10. Shackle (UF type)

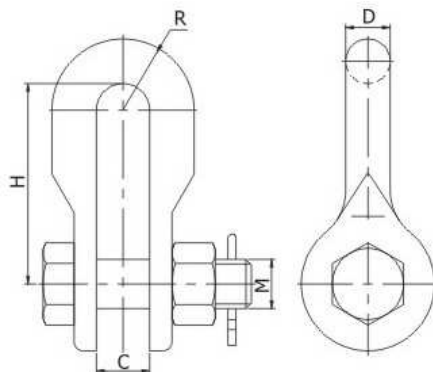


Catalog No.	Main Dimensions (mm)					Rated Failure Load (kN)	Weight (kg)
	C	M	D	H	R		
UF-7	20	16	16	80	10	70	0.50
UF-10	22	18	18	85	11	100	0.54
UF-12	24	22	20	90	12	120	0.96
UF-16	26	24	22	95	13	160	1.47
UF-20	30	27	24	100	15	200	2.20
UF-25	34	30	26	110	17	250	2.79
UF-30	38	36	30	130	19	300	3.70
UF-40	42	42	36	150	21	400	7.00
UF-50	44	42	36	150	22	500	7.00

The cotter pin is Stainless Steel, and other parts are Hot Dip Galvanized Steel.



11. Shackle (U type, UJ-Strengthened type)

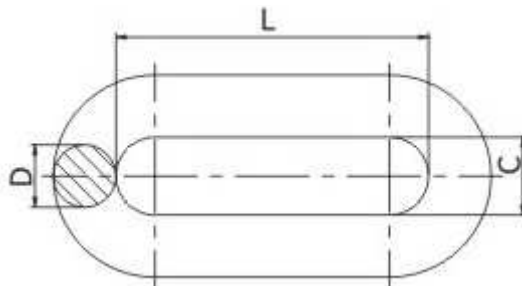


Catalog No.	Main Dimensions (mm)					Rated Failure Load (kN)	Weight (kg)
	C	M	D	H	R		
U-7	20	16	16	80	10	70	0.44
U-10	22	18	18	85	11	100	0.54
U-12	24	22	20	90	12	120	0.96
U-16	26	24	22	95	13	160	1.47
U-16T	28	24	22	90	14	160	1.50
U-21	30	27	24	100	15	210	2.20
U-25	34	30	26	110	17	250	2.79
U-30	38	36	30	130	19	300	4.30
U-30G.1	34	30	28	110	17	300	3.00
U-40	42	42	36	150	21	400	6.50
U-50	44	42	36	150	22	500	6.99
U-50G.1	40	36	36	170	20	500	6.55
U-60	50	48	185	38	25	600	10.8
U-60A	46	42	42	172	23	600	7.50
U-21G	24	24	22	100	12	210	1.50
U-32G	32	30	28	100	16	320	3.00
U-42G	36	36	32	110	18	420	4.60
U-50G	36	36	34	120	18	500	5.30

Specifications below are for U Shackle – Strengthened type

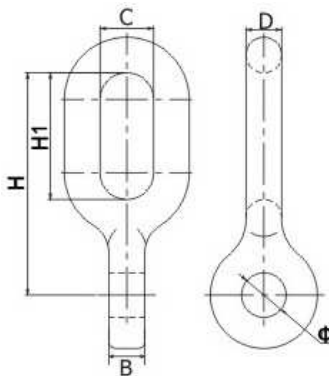
Catalog No.	Main Dimensions (mm)								Rated Failure Load (kN)	Weight (kg)
	A	B	C	M1	M2	L	L1	L2		
U-16J	60	60	30	24	24	195	75	87	160	5.70
U-20J	60	60	0	27	27	230	75	110	200	5.70
U-40J	70	108	44	42	42	323	125	120	400	13.9

The cotter pin is Stainless Steel, and other parts are Hot Dip Galvanized Steel.

**12. PH-type Extension Ring**

Catalog No.	Main Dimensions (mm)			Rated Failure Load (kN)	Weight (kg)
	C	D	L		
PH-7	20	16	80	70	0.4
PH-10	22	18	100	100	0.6
PH-12	24	20	120	120	0.9
PH-16	26	22	140	160	1.5
PH-20	30	24	160	200	1.6
PH-25	34	26	160	250	2.0
PH-30	38	30	180	300	3.0

Materials are made of Hot Dip Galvanized Steel.

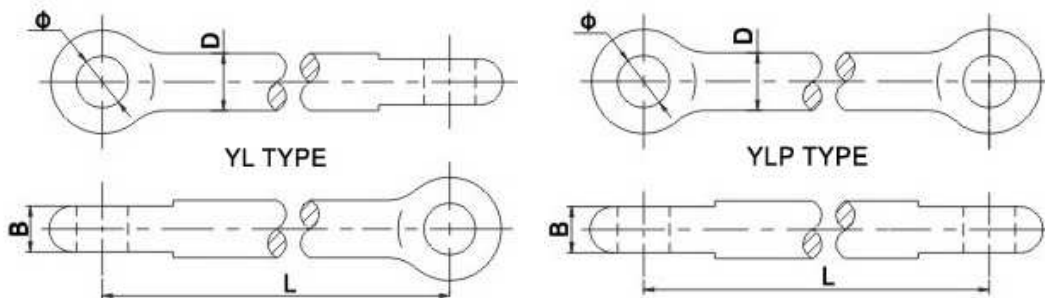
13. Eye Chain Links (ZH type)

Catalog No.	Main Dimensions (mm)						Rated Failure Load (kN)	Weight (kg)
	C	B	D	H1	H	Φ		
ZH-7	24	16	16	57	95	20	70	0.85
ZH-10	24	16	18	55	100	20	100	1.12
ZH-12	24	16	20	65	103	24	120	1.20
ZH-16	26	18	22	75	135	26	160	1.80

Materials are made of Hot Dip Galvanized Steel.



14. Extension Rod (YL, YLP type)



Catalog No.	Main Dimensions (mm)				Rated Failure Load (kN)	Weight (kg)
	D	Φ	B	L		
YL-1012	18	20	16	120	100	0.8
YL-1040	18	20	16	400	100	1.1
YL-1050	18	20	16	500	100	1.4
YL-1069	18	20	16	1000	100	2.2
YL-10100	18	20	16	690	100	1.9
YL-1243	22	24	18	430	120	1.6
YL-1640	22	26	18	400	160	1.6
YL-1643	22	26	18	430	160	1.6
YL-1655	22	26	18	550	160	2.5
YL-1657	22	26	18	570	160	2.7
YL-2043	24	30	20	430	200	3.0
YL-2155	26	30	20	550	210	3.1
YL-2165	26	30	20	650	210	3.1
Specifications below are for YLP Extension Rod						
Catalog No.	Main Dimensions (mm)				Rated Failure Load (kN)	Weight (kg)
	D	Φ	B	L		
YLP-16260	24	26	20	260	160	1.6
YLP-16850	24	26	20	850	160	3.7
YLP-16910	24	26	20	910	160	3.9
YLP-16970	24	26	20	970	160	4.1
YLP-16990	24	26	20	990	160	4.3
YLP-25855	30	33	30	855	250	6.2
YLP-25915	30	33	30	915	250	6.6
YLP-25935	30	33	30	935	250	6.7

Materials are made of Hot Dip Galvanized Steel.

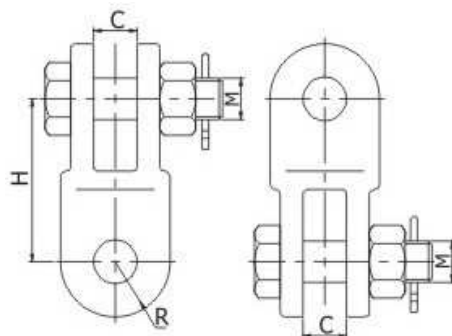


15-1. Z Clevis

	Catalog No.	Main Dimensions (mm)				Rated Failure Load (kN)	Weight (kg)
		C	C2	M	H		
	Z-7	18	18	16	80	70	0.56
	Z-10	20	20	18	80	100	0.87
	Z-12	24	24	22	100	120	1.16
	Z-16	26	26	24	100	160	2.38
	Z-21	30	30	27	120	210	3.80
	Z-25	34	34	30	120	250	5.00
	Z-30	38	38	36	120	300	5.80
	Z-40	44	44	42	180	400	14.0
	Z-50	44	44	42	120	500	8.60
	Z-16G	24	26	24	90	160	2.83
	Z-21G	24	26	24	90	210	3.60
	Z-32G	32	32	30	100	320	4.80
	Z-42G	36	38	36	110	420	5.20
	Z-64G	40	44	42	130	640	6.40

The cotter pins are Stainless Steel, and other parts are Hot Dip Galvanized Steel.

15-2. Z Clevis

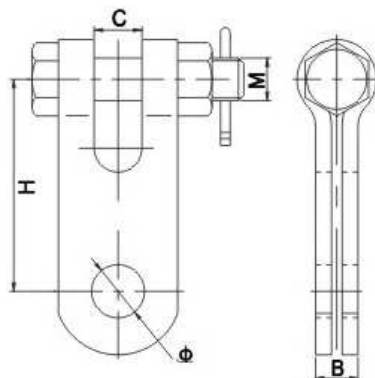


Catalog No.	Main Dimensions (mm)				Rated Failure Load (kN)	Weight (kg)
	C	R	M	H		
Z1-25	34	40	30	100	250	2.80
Z-30	38	46	36	135	300	5.40
Z-40	42	50	36	150	400	8.60
Z-60	50	62	48	180	600	19.6

The cotter pins are Stainless Steel, and other parts are Hot Dip Galvanized Steel.



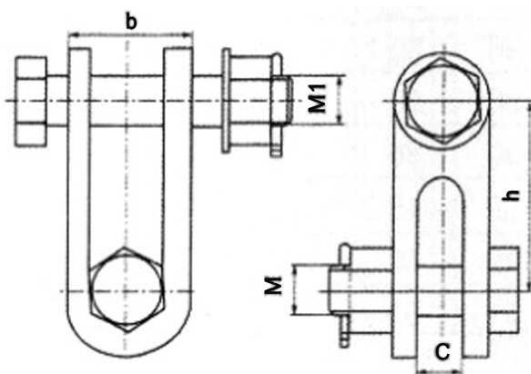
16. ZS Clevis



Catalog No.	Main Dimensions (mm)					Rated Failure Load (kN)	Weight (kg)
	C	B	M	Φ	H		
ZS-7	18	16	16	20	80	70	0.58
ZS-10	20	18	18	20	80	100	0.90
ZS-12	22	22	22	24	80	120	1.20
ZS-16	26	24	24	26	90	160	1.60
ZS-25	33	30	30	33	120	250	4.33
ZS-30	38	34	36	39	150	300	5.64

The cotter pins are Stainless Steel, and other parts are Hot Dip Galvanized Steel.

17. ZBS Clevis

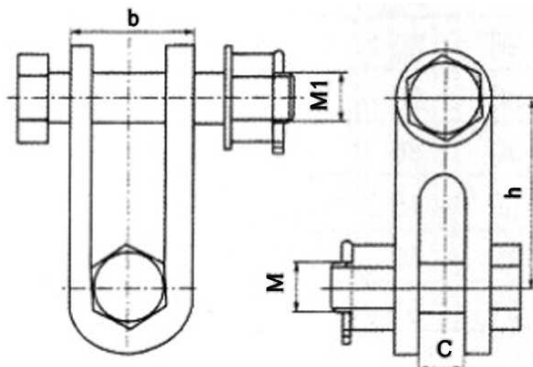


Catalog No.	Main Dimensions (mm)					Rated Failure Load (kN)	Weight (kg)
	C	b	M	h	Φ		
ZBS-16	26	24	24	60	63	160	4.80
ZBS-20	26	24	24	60	100	200	5.08
ZBS-25	30	27	27	60	12	250	6.65
ZBS-32	38	36	36	60	136	320	7.40
ZBS-32/16	26	24	36	60	140	160	6.80
ZBS-32/21	30	27	36	60	140	210	7.20

The cotter pins are Stainless Steel, and other parts are Hot Dip Galvanized Steel.



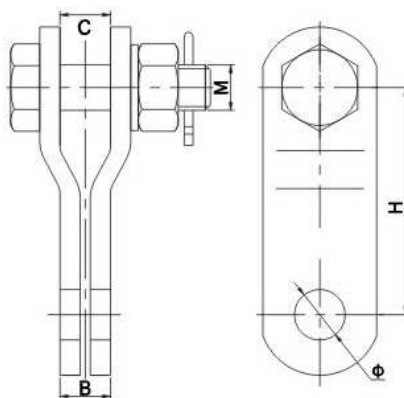
18. ZBS Clevis (ABS Suspension Type)



Catalog No.	Main Dimensions (mm)					Rated Failure Load (kN)	Weight (kg)
	C	b	M	h	Φ		
ZBS-6-1	22	18	16	30	70	70	1.80
ZBS-12-1	28	24	18	44	85	160	3.80
ZBS-15-1	28	26	18	44	110	210	4.10

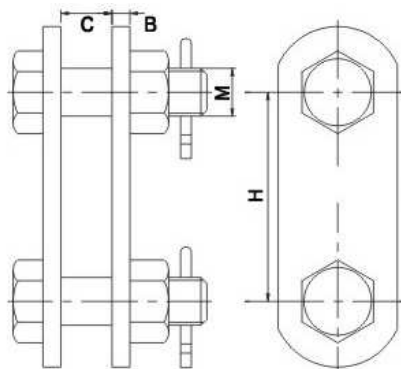
The cotter pins are Stainless Steel, and other parts are Hot Dip Galvanized Steel.

19. PS-type Clevis



Catalog No.	Main Dimensions (mm)					Rated Failure Load (kN)	Weight (kg)
	C	B	M	H	Φ		
PS-7	18	16	16	90	20	70	0.60
PS-10	20	20	18	90	20	100	0.80
PS-12	24	20	22	95	24	120	1.50
PS-16	26	24	24	155	26	160	2.70
PS-30	38	34	36	140	39	300	5.30

The cotter pins are Stainless Steel, and other parts are Hot Dip Galvanized Steel.

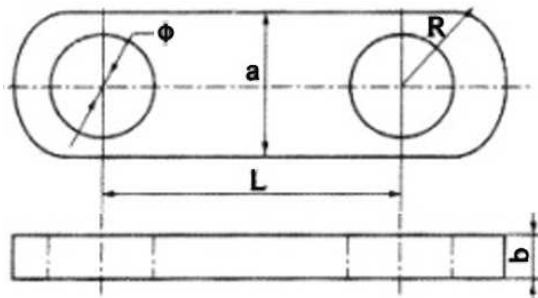
**20. P-type Clevis**

Catalog No.	Main Dimensions (mm)				Rated Failure Load (kN)	Weight (kg)
	B	C	M	H		
P-7	6	18	16	70	70	0.60
P-10	8	20	18	80	70	0.85
P-12	10	24	22	90	120	1.52
P-16	12	26	24	100	160	2.42
P-1630	12	26	24	300	160	4.80
P-20	14	30	27	120	210	4.09
P-25	16	34	30	120	250	5.20
P-30	16	38	36	120	300	4.74
P-2118	14	30	27	180	210	5.10
P-2130	14	30	27	240	210	6.00
P-2136	14	30	27	300	210	6.90
P-2142	14	30	27	360	210	7.80
P-2154	14	30	27	420	210	8.70
P-2148	14	30	27	480	210	9.70
P-2154	16	30	27	540	210	10.6
P-3018	16	38	36	180	300	6.10
P-3024	16	38	36	240	300	7.30
P-3030	16	38	36	300	300	8.40
P-3036	16	38	36	360	300	9.10
P-3042	16	38	36	420	300	10.9
P-3048	16	38	36	480	300	12.1
P-3054	16	38	36	540	300	13.3
P-5012	20	40	42	120	500	11.2
P-5024	20	40	42	240	500	14.5
P-50	18	44	42	200	500	12.5
P-16G	12	22	24	90	500	2.70
P-21G	12	24	24	120	500	3.20
P-32G	16	32	30	120	500	4.20
P-42G	18	36	36	150	500	9.30

The cotter pins are Stainless Steel, and other parts are Hot Dip Galvanized Steel.



21. PD-type Clevis



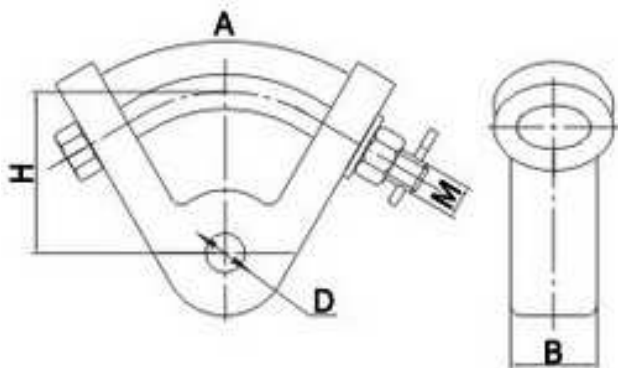
Catalog No.	Main Dimensions (mm)					Rated Failure Load (kN)	Weight (kg)
	a	b	L	φ	R		
PD-7	44	16	80	18	20	70	0.57
PD-16	64	18	100	26	26	160	1.28
PD-20	72	26	120	30	36	200	2.50
PD-2109	72	26	95	30	36	210	2.07
PD-3018	100	32	180	39	45	300	5.90
PD-5020	100	38	200	45	45	500	8.90
PD-60	100	42	160	51	51	600	9.80

Materials are made of Hot Dip Galvanized Steel.

22. UB-type Clevis

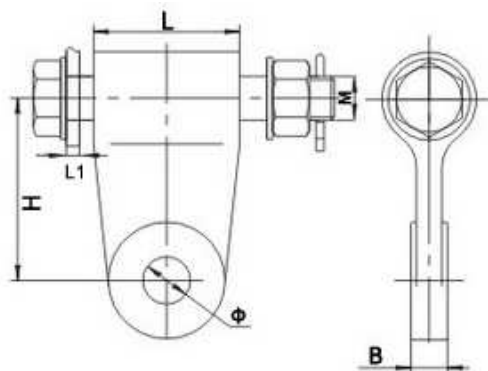
Catalog No.	Main Dimensions (mm)				Rated Failure Load (kN)	Weight (kg)
	C	M	H	A		
UB-7	18	16	70	45	70	0.75
UB-10	20	18	80	45	100	1.08
UB-12	24	22	100	60	120	2.82
UB-16	26	24	100	60	160	2.89
UB-16G	22	24	90	60	160	2.40
UB-21	30	27	120	70	210	3.80
UB-20T	30	27	120	70	200	3.90
UB-25T	34	30	150	60	250	5.70
UB-30T	38	36	150	60	300	7.00
UB-40T	44	42	150	80	400	8.20
UB-60T	50	48	180	70	600	15.55
Specifications below are for UB Suspension Type.						
UB-6-1	20	16	65	30	70	0.82
UB-9-1	20	18	65	40	100	1.20
UB-7G	20	16	65	40	70	0.80

The cotter pins are Stainless Steel, and other parts are Hot Dip Galvanized Steel.

**23. Clevis (V, VD type)**

Catalog No.	Main Dimensions (mm)					Rated Failure Load (kN)	Weight (kg)
	D	M	B	H	A		
V-7	18	20	40	75	60°	70	1.8
VD-7	18	20	28	75	60°	70	1.4

The cotter pins are Stainless Steel, and other parts are Hot Dip Galvanized Steel.

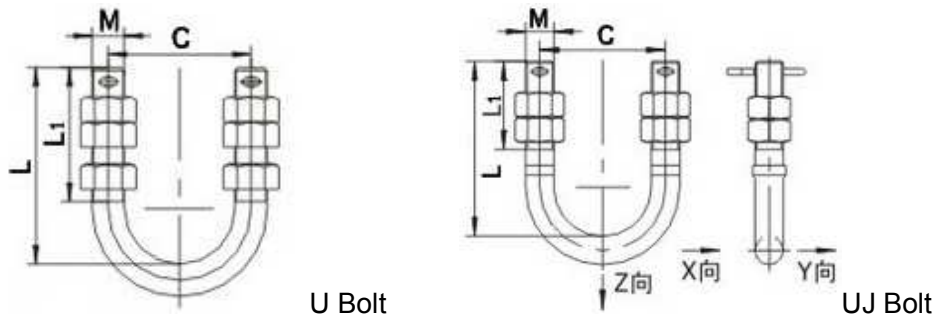
24. Joint Hung Plate

Catalog No.	Main Dimensions (mm)						Rated Failure Load (kN)	Weight (kg)
	B	Φ	H	M	L	L1		
LT-16	18	26	100	24	80	20	160	3.50
LT-30	32	39	100	36	80	25	300	6.80
EB-50D	34	39	125	36	116	25	500	13.0
EB-70	38	45	125	42	136	26	700	14.4
EB-70A	38	45	150	64	195	30	700	29.9
EB-70B	42	51	150	64	195	30	700	29.7
EB-70C	38	45	125	42	116	28	700	13.3

The cotter pins are Stainless Steel, and other parts are Hot Dip Galvanized Steel.



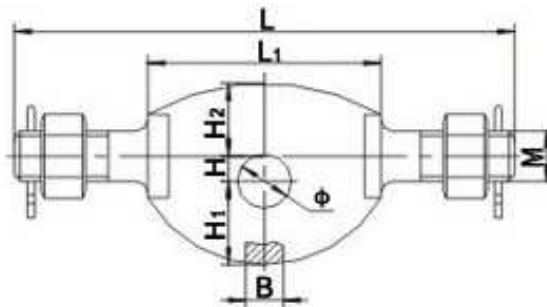
25. U Bolt



Catalog No.	Main Dimensions (mm)				Rated Failure Load (kN)			Weight (kg)
	C	M	L	L1	X	Y	Z	
U-1880	80	18	90	60	18	3.50	35	0.83
U-2080	80	20	100	70	24	4.90	47	1.08
U-2280	80	22	118	90	28	6.50	57	1.30
UJ-1880	80	18	105	50	18	5.30	35	0.85
UJ-2080	80	20	120	60	24	7.40	47	1.10
UJ-2280	80	22	127	65	28	10.8	57	1.40

The cotter pins are Stainless Steel, and other parts are Hot Dip Galvanized Steel.

26. GD Twisted Strap

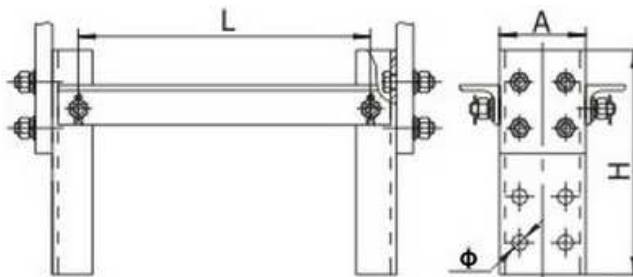


Catalog No.	Main Dimensions (mm)								Failure Load (kN)	Weight (kg)
	L	L1	Φ	M	H	B	H1	H2		
GD-12S	250	112	24	22	12	16	40	35	120	1.70
GD-21S	250	112	26	24	12	20	40	35	210	2.10
GD-32S	258	112	33	30	12	28	40	36	320	3.60
GD-42S	278	130	39	36	12	32	45	36	420	4.50
GD-50S	278	130	39	36	12	32	48	50	500	4.60
GD-12	240	112	24	22	30	18	30	35	120	1.35
GD-21	235	112	30	24	8	22	35	35	210	1.80
GD-30	264	112	33	30	12	30	46.5	35	300	3.30
GD-50	264	130	44	36	12	34	50	40	500	6.00
GD-60	290	130	50	42	16	42	50	46	600	6.50

The cotter pins are Stainless Steel, and other parts are Hot Dip Galvanized Steel.



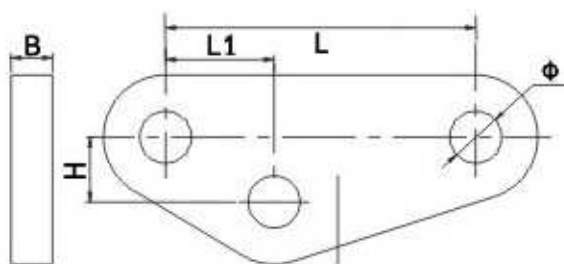
27. Support Plate



Catalog No.	Main Dimension (mm)				Weight (kg)
	Φ	A	H	L	
ZCJ-45	18	120	300	370	10.5
ZCJ-45H	18	120	445	358	14.2
ZCJ-50	18	120	300	416	13.1
ZCJ-50S	18	120	300	420	13.5

The cotter pins are Stainless Steel, and other parts are Hot Dip Galvanized Steel.

28. Towing Plate

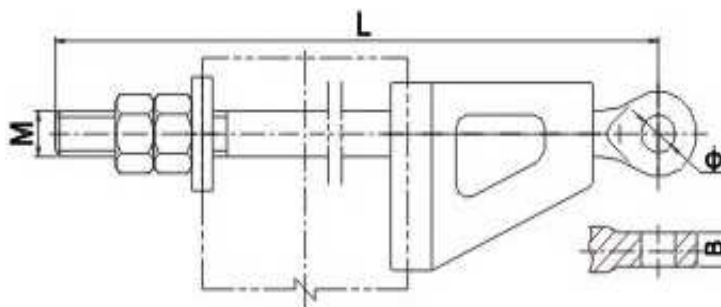


Catalog No.	Main Dimensions (mm)					Rated Failure Load (kN)	Weight (kg)
	B	Φ	H	L1	L		
QY-7	16	18	22	38	100	70	0.80
QY-10	16	20	25	42	120	100	1.10
QY-12	16	24	30	45	150	120	1.90
QY-16	18	26	35	55	180	160	2.60
QY-21	26	29	45	75	200	200	4.70
QY-50	38	45	70	100	260	500	15.4
QY-60	42	51	80	114	260	600	16.0
QY-21G	20	26	45	75	200	210	3.60
QY-25G	22	33	57	95	220	250	3.00
QY-32G	28	33	57	95	240	320	6.23
QY-30	32	39	57	95	240	300	7.30
QY-42G	32	39	70	100	260	420	6.50
QY-5026	38	45	75	120	260	500	13.0
QY-5036	38	45	70	120	360	500	13.4

Materials are made of Hot Dip Galvanized Steel.



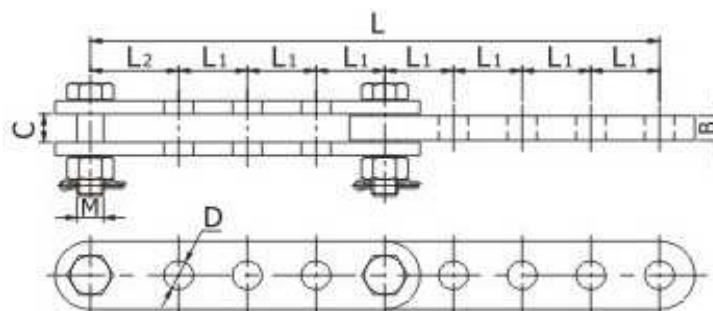
29. Ground Wire Hanger



Catalog No.	Suitable Range of Cone Reinforced Concrete	Main Dimensions (mm)				Weight (kg)
		B	Φ	M	L	
BD-1839	Φ190	18	18	20	390	4.26
BD-2244	Φ230	18	22	20	440	4.77
BD-2451	Φ300	18	24	20	510	5.25
BD-2762	Φ400	18	27	20	620	7.10

Materials are made of Hot Dip Galvanized Steel.

30. Adjuster Plate (PT type)

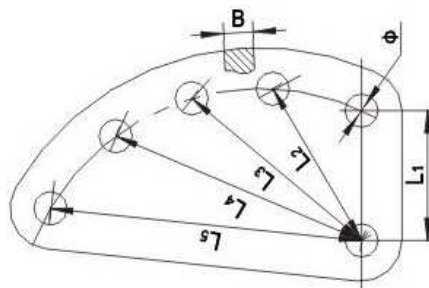


Catalog No.	Main Dimensions (mm)							Failure Load (kN)	Weight (kg)
	L1	L2	M	D	B	C	L(adjustable)		
PT-7	45	60	16	18	16	18	225~345	70	2.00
PT-10	50	65	18	20	16	20	225~300	100	2.90
PT-12	60	75	22	24	16	24	300~465	120	5.20
PT-16	65	80	24	25	18	26	325~465	160	7.00
PT-21	70	90	27	30	26	30	350~550	200	10.14
PT-30	80	100	36	39	32	38	400~630	300	14.00
PT-50	160	100	42	45	38	40	740~1280	500	24.60
PT-60	180	100	48	51	42	44	820~1390	600	31.60

The cotter pins are Stainless Steel, and other parts are Hot Dip Galvanized Steel.



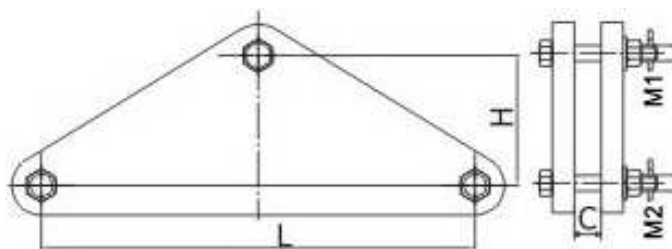
31. Adjuster Plate (DB type)



Catalog No.	Main Dimensions (mm)							Failure Load (kN)	Weight (kg)
	Φ	L1	L2	L3	L4	L5	B		
DB-7	18	70	95	120	145	170	16	70	1.70
DB-10	20	80	110	140	170	200	16	100	2.70
DB-12	24	100	135	170	205	240	16	120	3.20
DB-16	26	110	125	140	155	170	18	160	4.10
DB-20	30	120	135	150	165	180	26	200	7.40
DB-25	33	120	135	150	165	180	30	250	11.5
DB-30	39	120	140	160	18	200	32	300	12.5
DB-60	51	135	160	185	210	235	42	600	21.6
DB-5024	45	140	165	190	215	240	38	500	18.5
DB-5032	45	140	185	230	275	320	38	500	14.5
DB-21G	26	120	135	150	165	180	20	210	6.20
DB-32G	33	120	140	160	180	200	28	320	9.20

Materials are made of Hot Dip Galvanized Steel.

32. Double Yoke Plate

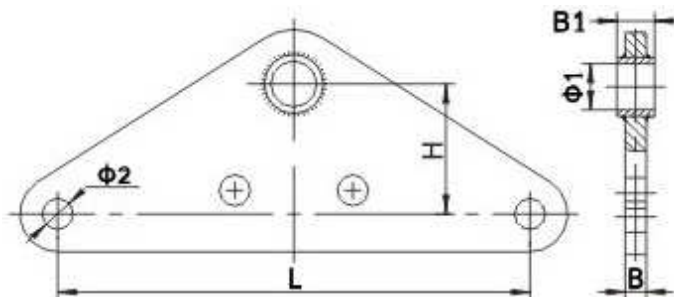


Catalog No.	Main Dimensions (mm)					Rated Failure Load (kN)	Weight (kg)
	L	H	C	M1	M2		
L-1240S	400	180	18	20	16	133	6.0
L-1640S	400	100	22	24	16	160	7.3
L-2040S	400	110	26	27	18	200	8.9
L-12457S	457	80	18	20	16	133	6.4
L-16457S	457	100	22	24	16	160	7.6
L-20457S	457	110	26	27	18	200	9.4

Materials are made of Hot Dip Galvanized Steel.



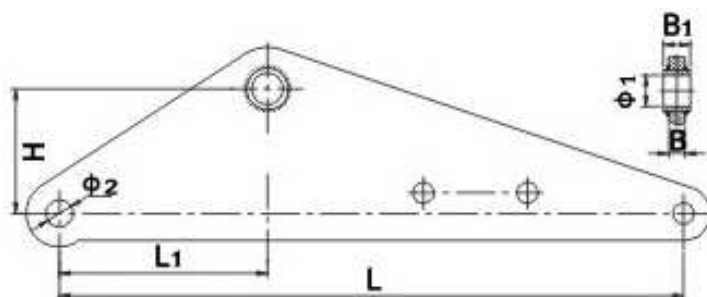
33-1. Yoke Plate



Catalog No.	Main Dimensions (mm)						Rated Failure Load (kN)	Weight (kg)
	B	B1	H	Φ1	Φ2	L		
L-1024	16	16	70	20	18	400	100	4.43
L-1240	16	16	70	24	18	400	120	4.66
L-1640	18	18	100	26	20	400	160	5.80
L-2140	16	26	100	30	20	400	200	6.90
L-2052	16	26	100	30	26	520	200	8.00
L-2055	16	26	200	30	24	550	200	11.8
L-2540	16	30	110	33	24	400	200	9.00
L-3040	18	32	110	39	26	400	300	10.0
L-4255	24	38	250	45	30	550	420	24.4
L-5040	30	38	110	45	33	400	500	14.8
L-6045	32	42	100	51	39	450	600	25.5
L-6050	32	42	250	51	39	500	600	23.4

Materials are made of Hot Dip Galvanized Steel.

33-2. Yoke Plate

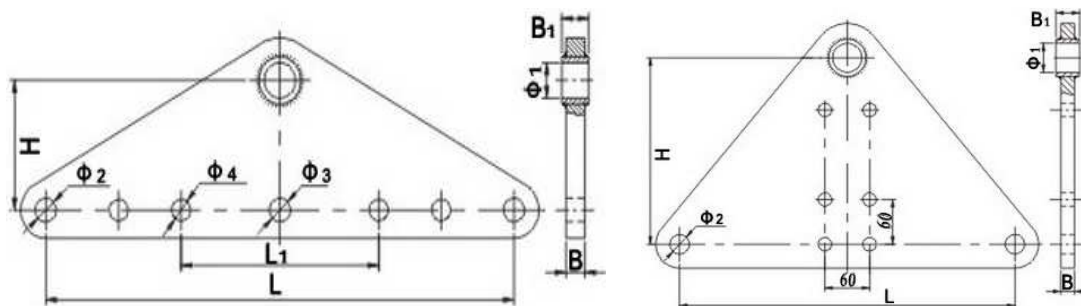


Catalog No.	Main Dimensions (mm)							Rated Failure Load (kN)	Weight (kg)
	B	B1	H	Φ1	Φ2	L	L1		
L-2060	18	26	120	30	26	600	200	200	11.8
L-3060	18	32	140	39	30	600	200	300	16.7

Materials are made of Hot Dip Galvanized Steel.



33-3/4. Yoke Plate

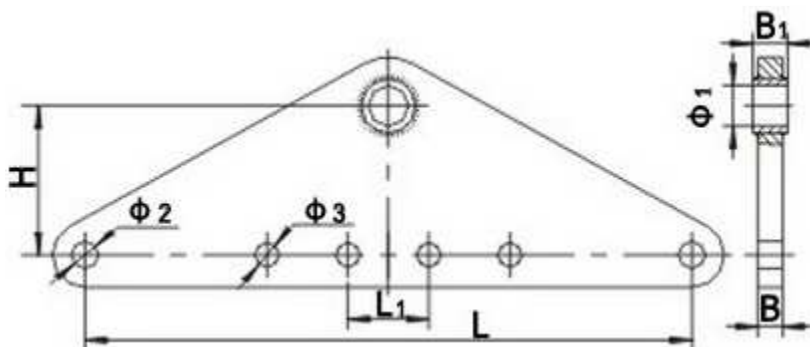


Catalog No.	Main Dimensions (mm)									Failure Load (kN)	Weight (kg)
	B	B1	H	L	L1	Φ1	Φ2	Φ3	Φ4		
L-1245	16	16	100	450	190	24	20	18	18	120	5.00
L-1650S	18	18	130	500	240	26	20	18	18	160	8.50
L-1645	22	22	100	450	70	26	20	18	18	160	8.40
L-1645G	18	18	130	450	130	26	20	20	18	160	7.80
L-2045X	18	26	130	450	190	30	20	20	18	200	7.40
L-2045A	18	26	130	450	190	30	20	18	18	200	8.00
L-2145	16	26	100	450	190	30	20	18	28	210	7.80
L-2150S	20	20	140	500	240	26	20	20	18	210	10.7
L-4045G	26	38	175	450	60	45	30	20	18	400	13.7

Specifications below are for Yoke Plate (Right Figure)

Catalog No.	Main Dimensions (mm)						Failure Load (kN)	Weight (kg)
	B	B1	H	Φ1	Φ2	L		
L-1045	16	16	250	20	20	450	100	15.0
L-1245	16	16	250	24	20	450	120	11.3
L-1645	18	26	250	30	20	450	160	16.0
L-2045	16	26	250	30	20	450	200	19.0
L-3045	18	32	250	39	26	450	300	11.0
L-3050	18	32	250	39	26	500	300	10.0
L-1645G	18	18	250	20	20	450	160	14.9
L-2145G	16	26	250	30	24	450	210	13.6
L-2150GN	20	20	250	26	26	500	210	21.0
L-3245GN	18	28	250	33	26	450	320	17.6
L-4250G	20	32	250	39	26	500	420	22.0
L-5045B	30	40	200	45	30	450	500	17.4

Materials are made of Hot Dip Galvanized Steel.

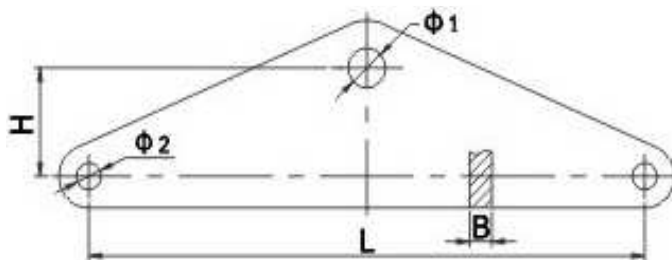
**33-5. Yoke Plate**

Catalog No.	Main Dimensions (mm)								Failure Load (kN)	Weight (kg)
	B	B1	H	L	L1	Φ1	Φ2	Φ3		
L-1645X	18	18	110	450	60	26	20	18	160	6.50
L-1650	22	14	110	500	60	26	24	14	160	11.1
L-2560	22	30	110	600	210	33	26	18	250	13.8
L-3045	20	32	120	450	60	39	26	18	300	9.80
L-3045G	22	32	110	450	60	39	26	18	300	10.5
L-4050A	26	38	130	500	60	39	30	18	400	16.9
L-4250	26	38	160	500	60	45	30	18	420	18.1
L-1250G	16	16	120	500	60	24	18	18	120	7.80
L-1650G	18	18	130	500	60	26	18	18	160	9.10
L-2145G	20	20	120	450	60	26	20	18	210	8.60
L-2150G	20	20	130	500	60	26	20	18	210	10.3
L-3245G	20	32	200	600	60	39	26	18	320	18.6
L-3250S	18	28	140	500	60	33	26	18	320	9.80
L-3255S	18	28	130	550	60	33	26	18	320	8.40
L-3260G	18	28	130	600	60	33	26	18	320	8.90
L-4250G	18	28	200	500	60	33	26	18	420	15.3
L-4260S	20	32	140	600	60	39	26	18	420	11.4
L-6450G	28	36	145	500	60	45	33	18	640	17.1
L-6460G	28	36	250	600	60	45	33	18	640	29.5
L-6470G	28	36	250	700	60	45	33	18	640	33.2

Materials are made of Hot Dip Galvanized Steel.



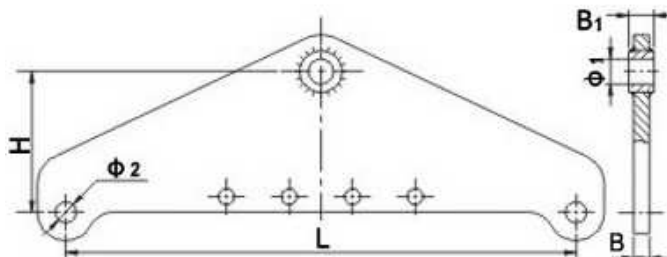
33-6. Yoke Plate



Catalog No.	Main Dimensions (mm)					Rated Failure Load (kN)	Weight (kg)
	B	H	Φ1	Φ2	L		
L-7	16	30	18	18	544	70	3.70
L3-070	30	160	39	33	700	300	22.4

Materials are made of Hot Dip Galvanized Steel.

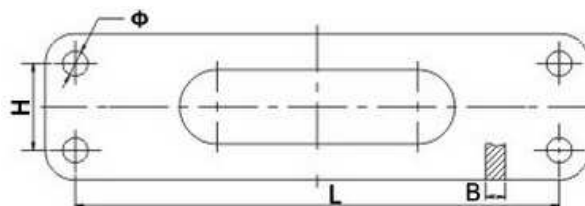
33-7. Yoke Plate



Catalog No.	Main Dimensions (mm)						Rated Failure Load (kN)	Weight (kg)
	B	B1	H	L	Φ1	Φ2		
L-2545X	22	30	150	450	33	26	250	8.50
L-3045G	22	32	150	450	39	26	300	8.60

Materials are made of Hot Dip Galvanized Steel.

34. Yoke Plate (LF type)

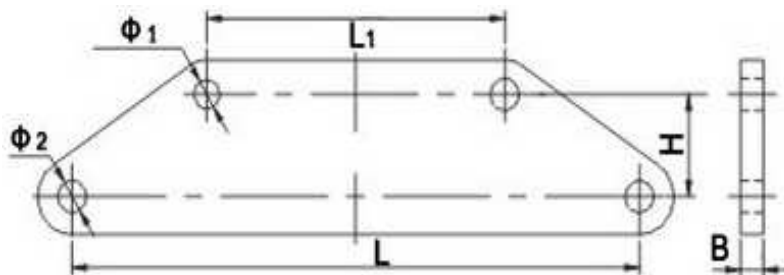


Catalog No.	Main Dimensions (mm)				Rated Failure Load (kN)	Weight (kg)
	B	H	Φ	L		
LF-2040	16	70	20	400	200	5.50
LF-2540	16	110	24	400	250	11.0
LF-3040	18	120	26	400	300	11.2
LF-4055	26	190	30	550	400	26.6

Materials are made of Hot Dip Galvanized Steel.



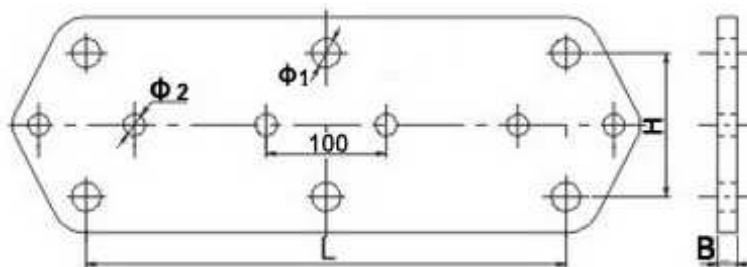
35. Yoke Plate (LS type)



Catalog No.	Main Dimensions (mm)						Rated Failure Load (kN)	Weight (kg)
	B	H	$\Phi 2$	$\Phi 1$	L	L1		
LS-1212	16	65	18	20	400	120	120	5.00
LS-1221	16	65	18	20	400	210	120	5.35
LS-1225	16	65	18	20	400	250	120	5.54
LS-1229	16	65	18	20	400	290	120	5.73
LS-1223	16	65	18	20	400	330	120	5.92
LS-1237	16	65	18	20	400	370	120	6.11
LS-1255	16	65	18	20	400	550	120	8.66
L-305045	32	130	39	39	450	500	300	29.6
LE-825550	20	150	26	26	500	550	420	17.6
LE-845550	32	150	39	39	500	550	840	32.1

Materials are made of Hot Dip Galvanized Steel.

36. Yoke Plate (LJ type)

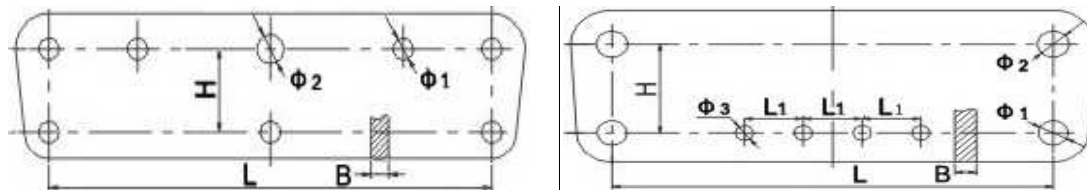


Catalog No.	Main Dimensions (mm)					Rated Failure Load (kN)	Weight (kg)
	B	H	$\Phi 1$	$\Phi 2$	L		
LJ-2540	16	120	24	18	400	250	11.10
LJ-3034	18	120	26	18	400	300	13.57

Materials are made of Hot Dip Galvanized Steel.



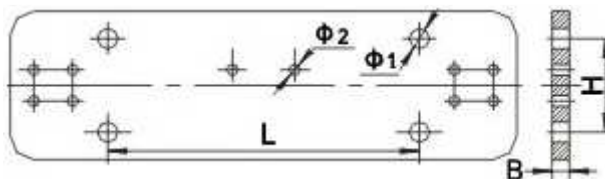
37. Yoke Plate (LJ type)



Catalog No.	Main Dimensions (mm)					Failure Load (kN)	Weight (kg)		
	B	H	Φ1	Φ2	L				
LJ-1040	16	70	18	20	400	100	6.50		
LJ-1240	16	70	18	24	400	120	6.45		
LJ-1640	18	100	20	26	400	160	9.54		
Catalog No.	Main Dimensions (mm)						Failure Load(kN)	Weight (kg)	
	B	H	Φ1	Φ2	Φ3	L1			L
LJ-3045	18	110	26	26	18	60	450	300	12.0
LJ-4405	22	110	30	32	18	60	450	400	17.0
LJ-6045	32	120	39	39	18	60	450	600	28.0

Materials are made of Hot Dip Galvanized Steel.

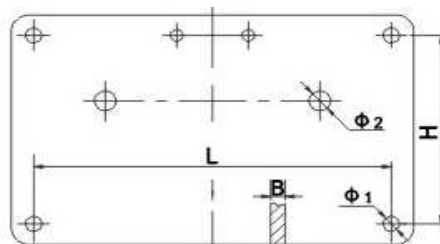
38. Yoke Plate (LBS type)



Catalog No.	Main Dimensions (mm)					Failure Load (kN)	Weight (kg)
	B	H	Φ1	Φ2	L		
LBS-3040	400	120	22	26	14	300	21.0

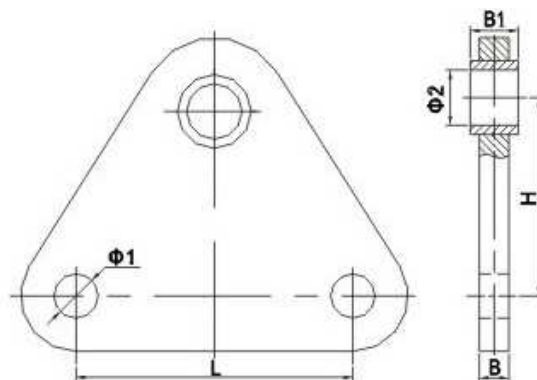
Materials are made of Hot Dip Galvanized Steel.

39. Yoke Plate (LBS type)



Catalog No.	Main Dimensions (mm)					Failure Load (kN)	Weight (kg)
	L	H	B	Φ1	Φ2		
LB-1240	400	250	16	18	24	120	17.0
LB-3040	400	120	22	26	24	300	10.0

Materials are made of Hot Dip Galvanized Steel.

**40. Yoke Plate for Double Guy Wire (LV type)**

Catalog No.	Main Dimensions (mm)						Rated Failure Load (kN)	Weight (kg)
	B	B1	$\phi 1$	$\phi 2$	H	L		
LV-1012	16	16	20	20	60	120	100	1.80
LV-1212	16	16	20	24	90	120	120	2.30
LV-1620	16	20	28.5	38	120	200	160	3.40
LV-2115	16	24	24	30	100	150	200	2.50
LV-2518	16	30	24	33	100	180	250	2.70
LV-3014	18	34	28.5	44	120	140	300	4.60
LV-3016	18	32	26	39	120	160	300	5.40
LV-3018	18	32	26	39	120	180	300	5.90
LV-4025	24	36	30	45	150	250	400	9.50
LV-5020	30	38	33	45	150	200	500	8.20

Materials are Hot Dip Galvanized Steel.

For more fittings that you do not find in our catalogue, please send an e-mail to us for further information, custom sizes and drawings are available upon request. Winning® Electrical will provide solutions to your overhead transmission and distribution lines.